



The w'ONE'ders

Spring 2



Welcome back!

I hope everybody had a lovely half term. Although it is a short one, we have a fun filled, action packed few weeks ahead of us!

PE - Dance and gymnastics
Outdoor ED - How things grow as we change from winter to spring.
Science - Seasonal change
Maths - Place value to 50, length, height, mass and volume.

Theme

Our theme this half term is 'What is the weather like in the UK?' We are currently exploring different parts of the UK looking in atlas' and using Google Earth. We will be venturing into the UK seasons and weather (mostly rain) later on this half term.

Things to remember

Monday	Tuesday	Wednesday	Thursday	Friday
Outdoor ED PE			Library day	Reading record check PE

Please don't hesitate to contact us with any questions!
- Year One team.

Year 1 - What is the weather like in the UK?



Kapow
Primary

Weather symbols



sunny



sunny and
cloudy



rain



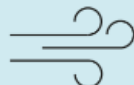
snow



thunder and
lightning

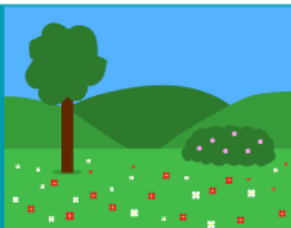


cloudy



windy

spring



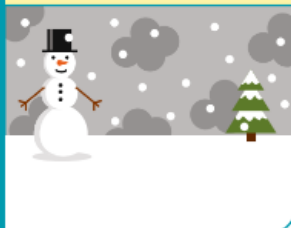
summer



autumn



winter



Map of the UK

